



# 2023 Annual General Meeting

---



@MinnesotaWomensSoccerLeague



MWSLMN

# Agenda

- Welcome and Introductions
- National, Regional, & State Updates
- State of the League
- Board & Committees
- Board Elections
- Summer Registration  
(Team and Player)
- Fees, Fines, Field Info,  
and Schedules
- Game Day Information
- Fall League
- Winter League
- Tournaments
- Q and A

# Introductions



**Angie Larson**  
Fireballs  
12 years on Board



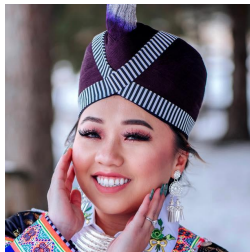
**Karissa Richardson**  
3rd Half Champs  
15+ years on Board



**Lauren Smith**  
MPLS Unity  
1 year on Board



**Alyssa Rupp**  
Fireflies  
4 years on Board



**Samantha Yang**  
Shooting Stars  
2 years on Board



**Kim Edelman**  
Cougar Machete  
9 years on Board



**Diana Yang-Lee**  
Hornets  
1 year on Board

# Board and League Information

---



# National, Regional, and State Updates

- United States Adult Soccer Association (USASA)
- USASA Region II
- Minnesota Soccer Association (MSA)

# State of the League

## 2022 Accomplishments

- 1,621 player registrations in 2022
  - Consistent with player registrations from prior years (included Charity Tournament)
- Charity Tournament returned (May 14th, 2022)
- Day with MNUFC (August 27th, 2022)
- First full year on Demosphere system

# State of the League

## 2023 Important Updates

- Recovering numbers post COVID
- Still serious referee shortage

# Sportsmanship and Player Conduct

- MWSL is an **amateur** league
  - Goal is to have fun
  - Want our players to stay safe
- Unsportsmanlike behavior **is not** tolerated
  - Red Cards in MWSL may mean multiple game suspensions (i.e.- violent conduct or referee dissent).
- Rules and Regulations are in place for a reason
  - Player and member insurance
  - Player and referee safety



# Board and Committees

- The MWSL operates under a board and committees.
  - Six officers have specified roles and emails they monitor related to their position.
  - At-large members support the board as a whole and help where needed.
  - All members have voting powers and serve at least a one year term.
- Monthly board meetings
- Attendance and commitments are purposefully kept flexible as we are all volunteers.
- More than ever, we are looking for help as folks transition. Some areas of need relate to...
  - Treasurer
  - At large members (social media, marketing and growth, outreach, etc)

# Board Positions

- Board positions include:
  - President
  - Vice President
  - Secretary
  - Treasurer
  - Field and Schedule Coordinator
  - Commissioner
  - At-large members
- Read about these positions [here](#)

# Committees

- Marketing/Growth:
  - Focuses on the branding and promotion of the MWSL in order to provide a meaningful experience for both current and new members.
  - Contact committee lead **Kim Edelman – kimedelman68@gmail.com** for more info.
- Charity Tournament:
  - Soliciting teams and donations
  - Coordinating swag, food, logistics, and orders
  - Day-of volunteers
  - Several opportunities of varying involvement
  - Contact committee at **info@mwsl.org** for more info

# How to Get Involved

- Attend a board meeting
- Volunteer at the Charity Tournament
- Join a committee
- Become a board member
- Volunteering with the MWSL is what you make of it. We have tasks and on-going projects to fit nearly every level of time commitment and difficulty.
- Email [info@mwsl.org](mailto:info@mwsl.org) if you're interested or have questions.

# Board Elections

- **President:** OPEN for 2023 (*Alyssa Rupp running*)
- **Vice President:** Alyssa Rupp (*Diana Yang-Lee running*)
- **Secretary:** Samantha Yang
- **Treasurer:** OPEN for 2023 (*Julie Stolarski running*)
- **Field and Schedule Coordinator:** Karissa Richardson
- **Commissioner:** Kim Edelman
- **At-large members:**
  - Diana Yang
  - Lauren Smith
  - Bethany Paradee (interim acting Treasurer)
  - Angie Larson
  - OPEN for 2023

# Summer League Information

---



# Summer Team Registration

Team Registration open March 11th - April 8th

- 11v11 for Divisions 1 through Rec
- 7v7 for Rec
- Full team registration fee of \$300 due upon registration
- If you are a returning team, but with a new name, notify MWSL
- This step is purely a team application. Managers and players still have to complete a player registration in a subsequent registration process.

# Summer Team Registration

Team Registration open March 11th - April 8th

- Make sure to register your team under the appropriate division **based on skill level, NOT the nights of play.**
  - The MWSL reserves the right to assign teams to a division
  - Unsure of which division your team fits? Read about them [here](#)
- Register your team by visiting [www.mwsl.org](http://www.mwsl.org) and clicking on the registration link on the homepage. A [how-to](#) guide is available to help if you get stuck.
- Whomever registers the team will be considered the main team manager. All fees will be charged to this person.



# Summer Team Registration



## Team Registration

1  
SELECT

2  
FORM

3  
REVIEW

4  
CHECKOUT

5  
CONFIRMATION



The registration window for the selected season is not currently open.  
You may select any open seasons/groupings from the options below.

### Select Season & Grouping

Only seasons currently open for registration are listed

Competition	Season	Grouping
<input type="text"/>	<input type="text"/>	<input type="text"/>

Registration Fee  
**\$0.00**

### Identify Team

To register an existing team, enter its Universal ID below ?

Team Universal ID	Team Name *
Team Type *	Team Gender *
	Team Age *

NEXT >

# Summer Player Registration

Player Registration open April 15th - June 30th


- Once all team registrations has been approved, you'll receive a notification for players to begin registering around April 15th.
  - Players are responsible for their own registration, DO NOT register for others.
  - Please allow a few days for newly registered players to be approved and show up on your roster (registering the day of a game and expecting to be eligible is not a good idea).
- Players must pay the \$26 player registration fee and upload an acceptable photo for their player pass.
- Players **will not be permitted to play** without registering and providing a photo for their electronic player pass. NO EXCEPTIONS.

# Summer Player Registration

Player Registration open April 15th - June 30th

- Register as a player by visiting [www.mwsl.org](http://www.mwsl.org) and clicking on the registration link on the homepage. A how-to guide is available to help if you get stuck.
  - Everyone needs to complete a registration, including any managers who do not actively play
  - Managers who aren't players, please register as a "Team Staff/Volunteer" only
  - Managers who double as players will register under two designations (see how-to doc)
- Players may register under more than one team. Any subsequent registrations will have a 100% discount applied for the player registration fee.
- DO NOT create separate accounts or create a new one if you've forgotten your login credentials. This creates havoc on the backend.

# Summer Player Registration

Member Login

Help


Step 1  
Welcome


Step 2  
Collect Order Item Info

Step 3  
Additions

Step 4  
Complete Order

Household Information

**Registration Step 1.2** - HOUSEHOLD INFORMATION

 My Household

Household Name

Alyssa Rupp

Your Phone #

Country

United States

Address

City

State

MN

ZIP

Save and Continue

# Looking for Players, Looking for a Team?

- The MWSL Facebook page and Facebook group are great places to find players for your team, or find a team looking for players.
- <https://www.facebook.com/groups/100700165326/>
- The MWSL does not place players on teams.
- We are hoping to develop further resources that don't involve social media.

# Fees and Fines

## Up-front Fees

- Team Registration Fee: \$300
- Performance Bond: \$300
  - Performance bond due...
    - May 1st for D2, D3, D4 and Rec
    - May 15th for D1
  - Failure to fulfill performance bond by deadline will result in a weekly late fee.
  - If payment is not received by first game, the team will be removed from the schedule. Any games that take place during that time will be considered a forfeit in the standings.
  - Check with MWSL Treasurer to see if you've had money carry over from last summer
- Player Registration Fee: \$26

# Fees and Fines

## Referee Fees - paid at halftime of each game

- 2023 Fees
  - 3 Referees - \$258/game or \$129/team
  - 2 Referees - \$184/game or \$92/team
  - 1 Referee - \$110/game or \$55/team
  - 7v7 -1 Referee- \$66/game or \$33/team

# Fees and Fines

## Field Fees - paid to league after first game

- If MWSL is scheduling your fields, 2023 Field fees will be charged to your team manager's account (this only includes home games).
- Costs are equally divided amongst all teams
  - 2022 Field Fees for the year per team averaged \$585
  - Projected 2023 cost - \$120 per game



# Fees and Fines

## Fines

- Refer to the Fees and Fines document on our website
- Team managers especially, please be familiar with these fines, especially for game forfeits
- Fines are deducted from your performance bond. If your performance bond is depleted, you will be notified and have 7 days to replenish it, otherwise future games will be cancelled.

# Fields

## Scheduling Fields

- MWSL will continue to schedule fields for teams unless you secure your own.
  - If the MWSL schedules your team a field, your team is responsible for the cost.
  - As soon as the schedule is completed, we send payment to the fields so your team is responsible for the cost regardless if you obtain other fields.
- Teams may indicate preferences for home fields by emailing [fields@mwsl.org](mailto:fields@mwsl.org) and we'll try to make accommodations where we can. No guarantees.
- Why let MWSL schedule your fields?
  - Many field coordinators are not open to working with teams
  - Reduces game modifications/changes for MWSL Field and Schedule Coordinator

# Fields

## Reserving Your Own Fields

- Email [fields@mwsf.org](mailto:fields@mwsf.org) by **April 8th** if you are scheduling your own fields as the schedule will be made soon after.
- When you find fields, also include the following details in your email:
  - Team name, date of game(s), field location and number (if applicable), and street address if the field is not currently used by the MWSL.
  - We need this info 2 weeks prior to your first game

# Fields

## MWSL Contracted Fields

- 2023 contracted fields
  - Victory Park
  - Johnny Cake Ridge Park East - Apple Valley
  - Coon Rapids
  - Mounds View School District
  - National Sports Center
  - Centennial
- Please do not contact these fields directly
- Not using Murray Field in St. Paul
- Hoping to return to St. Thomas Academy

# Fields

## Field Locations

- MWSL requires fields to be within 35 miles from the Minnesota State Fairgrounds
  - Based on this address: 1265 North Snelling Ave, St. Paul, MN 55108
- Field size requirement
  - 110-120 yards (100-110 m) long
  - 70-80 yards (64-73 m) wide
- Banned fields include
  - Afton (Maplewood)
  - Geranium (Maplewood)

# Game Schedules

- Schedules will be available in **late April/early May** on our website and on your Demosphere app.
- The MWSL cannot promise we will provide home games for dates you reserve with your own fields ahead of the schedule being posted.
- Bye Weeks (subject to change):
  - All division: July 3-6 (4th of July) and July 17-22 (USA Cup)
- We may need to add additional byes due to field availability

# Game Day Information

## Weather

- Games will **only** be cancelled under the following circumstances:
  - Field manager closes the field
  - Referees, **at the field**, deem field conditions are unplayable or unsafe
  - We will post on social media and email teams as soon as we get word of a field closure. We will do our best to communicate this as soon as we hear, but please be patient.
- If a game is called off before making it to halftime because of weather, each team will have \$15 deducted from their performance bond.

# Game Day Information

## Forfeits and Game Changes

- If you must forfeit a game, make changes to it's time or location, or reschedule, email [fields@mwsf.org](mailto:fields@mwsf.org) **and** [info@mwsf.org](mailto:info@mwsf.org) ASAP.
  - **You** are responsible of notifying the other team manager of said change, not the league.
  - Team manager contact info is provided on the [Contact page](#) of our website
- Fees regarding forfeits:
  - Team forfeit/changes game/or reschedules between 48 hours and noon on game day – \$50
  - Team forfeit/changes game/or reschedules after noon on game day – \$50 + full referee fee
- All fines deducted from performance bonds. Do not pay fines at the field.



# Game Day Information

## Player Passes

- Player passes remain physical for 2023 and you must present a valid player pass to play
  - An appropriate photo must be used
  - Team managers are responsible for printing and distributing their players' passes. Please get as many of your players registered ahead of the first game as possible to avoid delays in players registrations being approved or technical difficulties.
  - We recommend laminating your passes and you can hand them out individually, especially if people want to sub.
  - A second form of ID (such as a driver's license) is not needed on gameday.
  - A how-to guide is available on our website

# Game Day Information

## Rosters

- Only official rosters printed via the MWSL website will be accepted.
- Each team must present a roster to the referee on gameday.
- Anyone has access to print game day rosters, [how-to](#) guide here.
- For both 11v11 and 7v7 games, you may have a **maximum of 6 write-ins** (written in by hand at the field) on your roster. All players must have a valid MWSL pass.
  - Players can register for more than one team (as long as they are digitally printed on the roster, they would not count as a write-in).

# Game Day Information

## Players pass and roster population won't happen instantaneously

- A board member has to take multiple steps to get a player to appear on a roster and to generate their player pass (this includes showing up on the app under their respective team).
- Ahead of the season we try to approve new registrations every couple of days and at least **every Sunday night** before a new week of games.
- We cannot guarantee a player pass or roster appearance if you register after Sunday evening for a game that week.

# Game Day Information

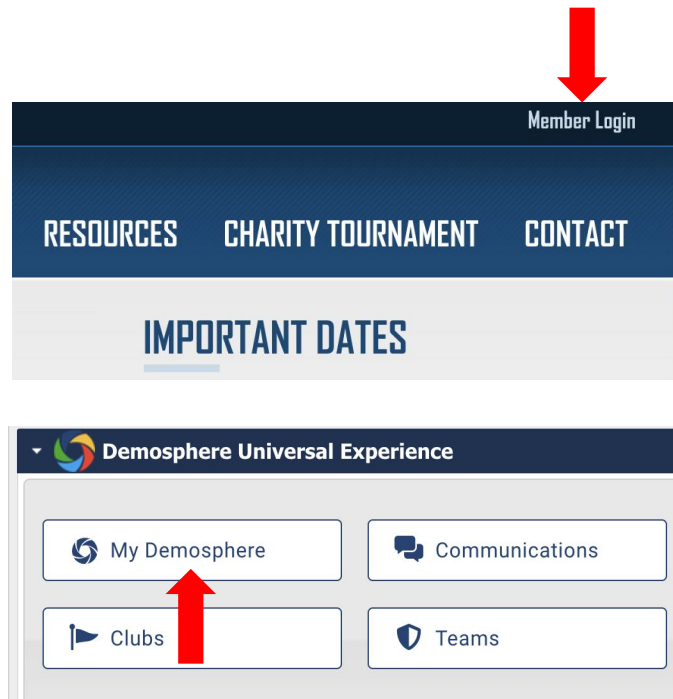
## Field Lights

- Most field lights are automatic and do not require teams to turn them on and off.
- MWSL-contracted fields that have light directives
  - Victory Park in New Hope: lights are automatic but if issues arise, contact Justin
  - Coon Rapids: teams need to turn the lights off after use by using the lock box
- Refer to [how-to](#) guide on lights for contact info

# Game Day Information

## Demosphere Mobile App

- Everyone can download this app and utilize as you wish. Its features include...
  - Game schedule
  - Attendance for each game on the calendar
  - Send messages to team and individuals
- Learn more about its capabilities [here](#)
- A desktop version of the team platform exists by logging into mwsf.org and then clicking “My Demosphere”



# Game Day Information

## Jewelry

- ABSOLUTELY NO JEWELRY, NO EXCEPTIONS
  - This includes sports watch or covering sports watch with sweat band
  - Covering jewelry with tape is not acceptable
- FIFA regulation
- Even 'permanent' jewelry is unacceptable. If the referees says it has to come out, it comes out or you do not play.

## Injury Claims

- If you get injured during a game, make sure the referee makes note in their game report (even if you think you won't need medical care).
- Report your injury to the league by filling out [this form](#) within 90 days
- [Reporting Injuries](#) help guide can be found on our website

# Game Day Information

## What are home teams responsible for on gameday?

- Home teams are responsible for the following...
  - Corner flags
  - Goal anchors (in the event a field doesn't already have them in place)
  - Game ball
  - Changing jersey color if it conflicts with the opposing team
- A Summer Guide for Team Managers lives on our website to help direct new managers or refresh returning ones.

# Additional Information

---





# Fall League

- Runs September - October 2023
- Takes place at Hazlewood Park in Maplewood
  - Wednesday nights (11v11 Competitive): 6:30 and 8:30pm start times
  - Thursday nights (7v7 Rec): 7:00, 8:00, and 9:00pm start times

# Winter League

- Winter 2023/2024 is dependent on field availability
  - Tuesday nights
  - WSP Dome & Conway in Maplewood
  - 7:00pm, 8:00pm & 9:00pm
- More information to come via MWSL website and social media platforms
- 3 divisions

# Tournaments

## Ancient Rangers Tournament

- Women's over 30 tournament
- September 9-10th (4 games over Saturday and Sunday)
- 11v11 & 8v8, outdoor games at the National Sports Center
  - 7v7 started in 2019; well received. More teams would = better split of Rec/Comp
- Cost around \$35 per player depending on roster size

# Tournaments

## Charity Tournament

- May 6th, 2023
- West St. Paul Sports Dome
- \$400 team registration fee
- 7v7, with competitive, semi-competitive, and rec divisions, 3 game minimum, 20 minute halves
- Players must be register and pay the \$5 player registration fee
- Silent auction, prize wheel, swag, snacks, and fun!
- Benefits [Kaityln's Kloset](#)
- Space per division is limited
- Visit [mwsf.org/charity-tournament](https://mwsf.org/charity-tournament) for more info.

Beneficiary	Donation
2011 MOCA	\$3,420
2012 Tubman	\$5,687
2013 Women's Advocate	\$6,700
2014 MOCA	\$8,275
2015 Cornerstone	\$7,016
2016 Alliance Housing Inc.	\$8,501
2017 Operation Glass Slipper	\$14,441
2018 Girls Circle H.E.A.R.T	\$8,342
2019 Like A Girl	\$6,500
2020 & 2021	No tourney
<b>2022 MWSL</b>	\$4,000

# Q and A

**We'll do our best to answer your questions!**



# Thank You for Coming!

---



@MinnesotaWomensSoccerLeague

[www.mwsl.org](http://www.mwsl.org)